

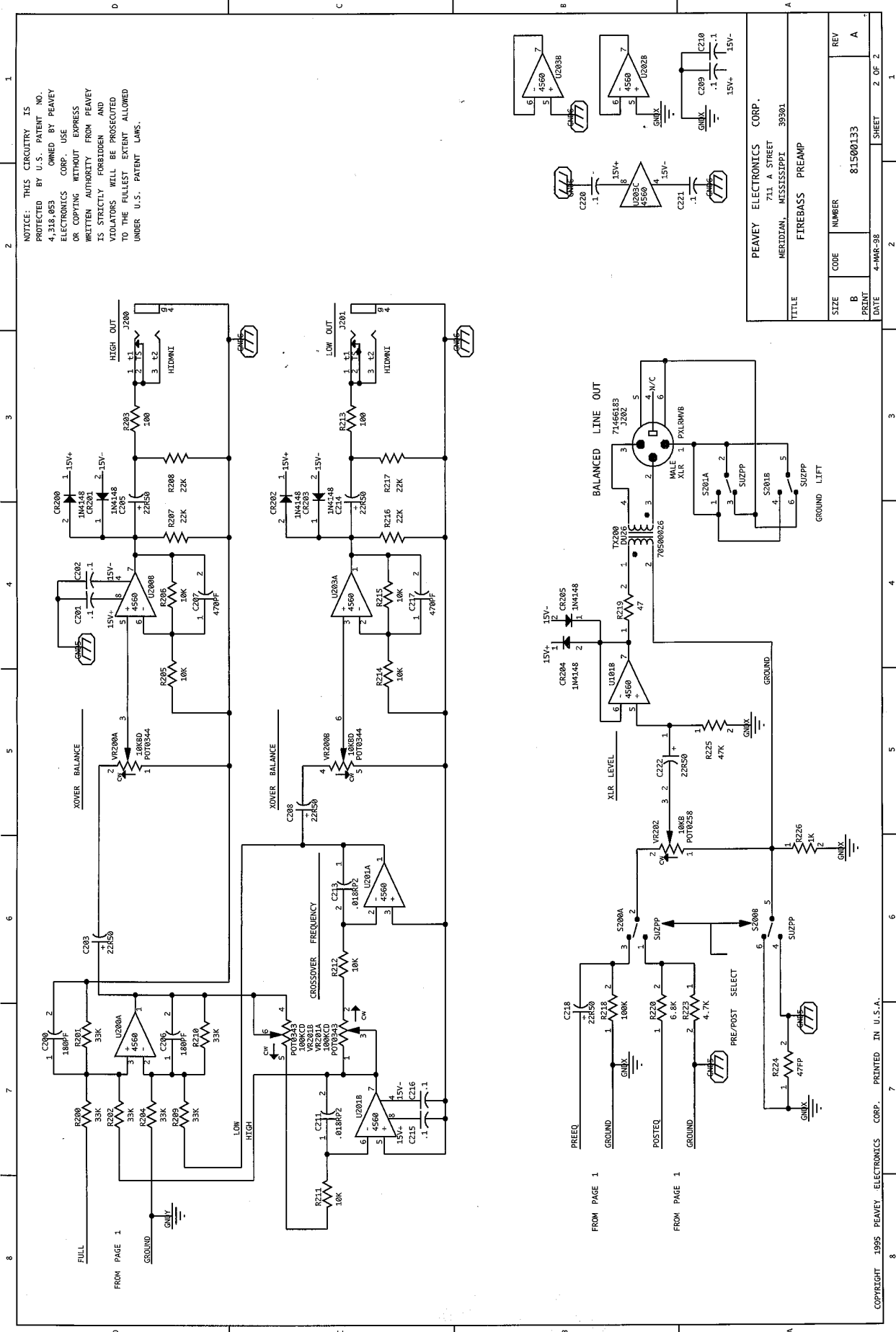
NOTE: HIGHEST AND LOWEST VALUES ARE 20% TOLERANCE UNLESS OTHERWISE SPECIFIED.

NOTE: CONNECT ALL GROUND POINTS TO COMMON GROUND.

NOTE: THIS CIRCUITRY IS PROTECTED BY U.S. PATENT NO. 4,128,891 GRANTED BY PEAVEY OR CHRYSLER ALTHOUGH IMPROVEMENTS MAY BE MADE WITHOUT VIOLATIONS WILL BE PROTECTED TO THE FULLEST EXTENT ALLOWED UNDER U.S. PATENT LAWS.

PEAVEY ELECTRONICS CORP.	
711 A STREET	
MERRIFIELD, MASSACHUSETTS 02154	
FIREBASS PREAMP	
SIZE	NUMBER
C	81500133
DATE	4-14-73
SHEET	1 OF 2

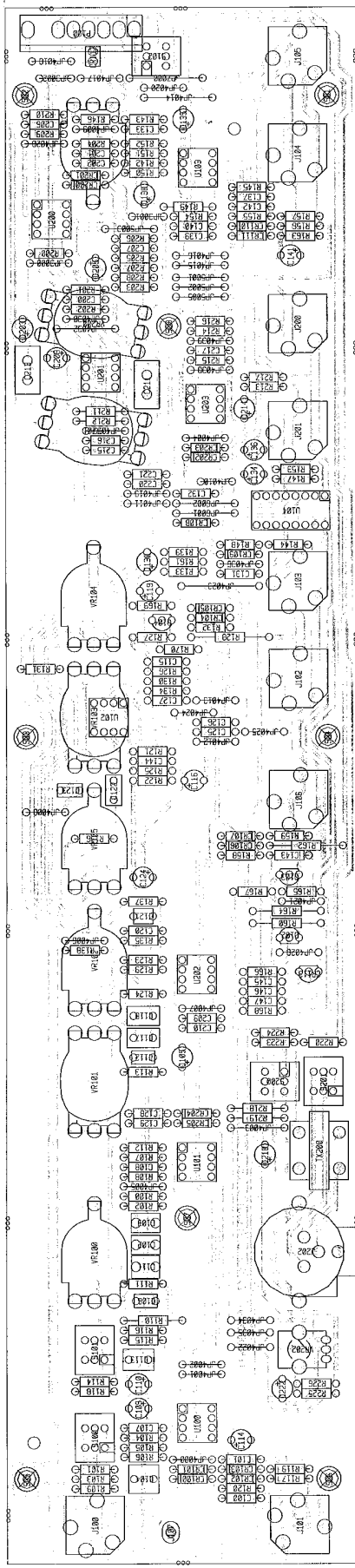
NOTICE: THIS CIRCUITRY IS PROTECTED BY U.S. PATENT NO. 4,318,853 OWNED BY PEAVEY ELECTRONICS CORP. USE OR COPYING WITHOUT EXPRESS WRITTEN AUTHORITY FROM PEAVEY IS STRICTLY FORBIDDEN AND VIOLATORS WILL BE PROSECUTED TO THE FULLEST EXTENT ALLOWED UNDER U.S. PATENT LAWS.



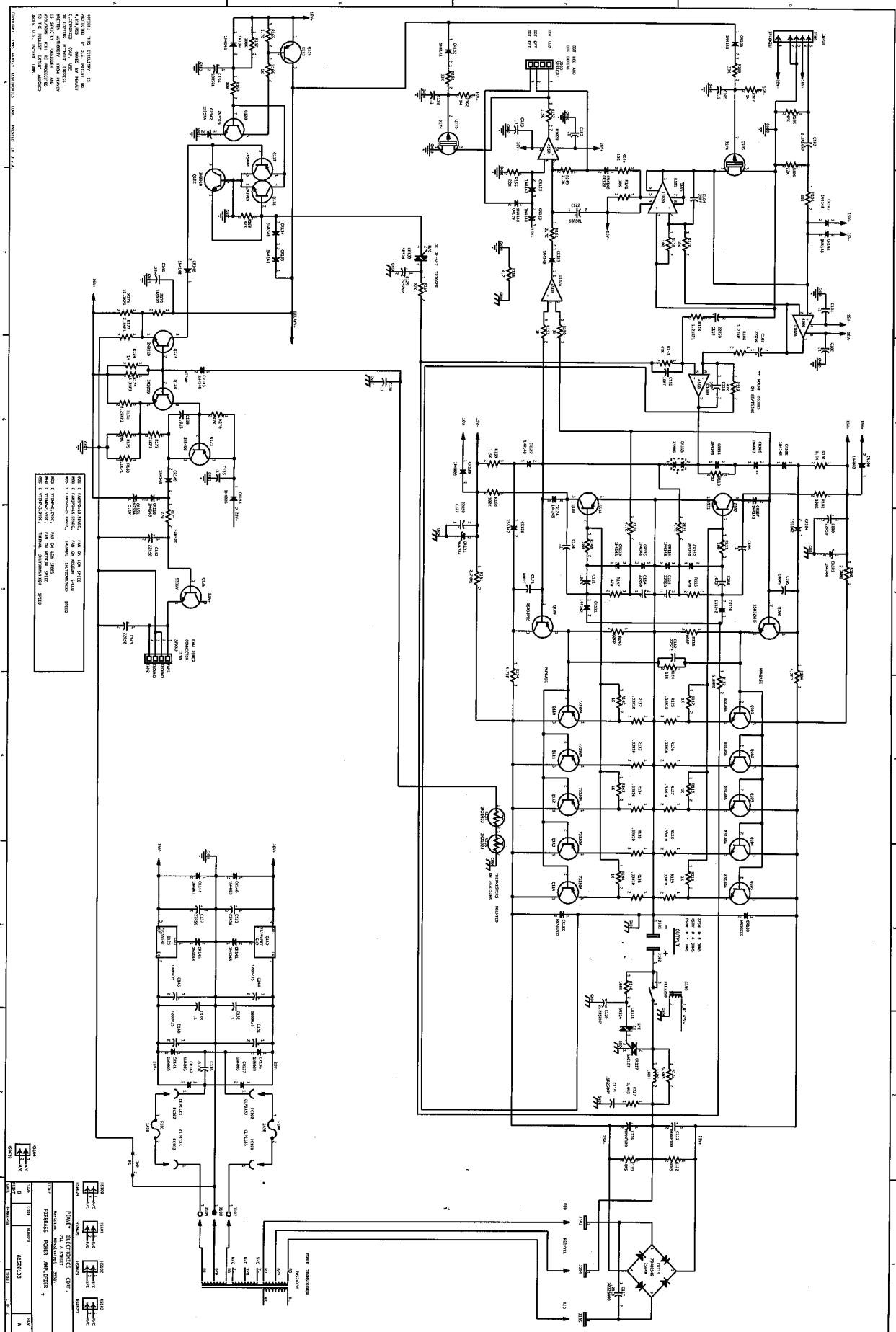
PEAVEY ELECTRONICS CORP.	
711 A STREET	
MERIDIAN, MISSISSIPPI 39301	
TITLE FIREBASS PREAMP	
SIZE B	CODE NUMBER
PRINT DATE	REV 81500133
4-MAR-98	2 OF 2

BOARD NAME: FIREBRASS
 PART DESCRIPTION AND DEVICE DESIGNATIONS
 QTY NAME VALUE NUMBER AND DEVICE DESIGNATIONS ***

QTY	NAME	VALUE	NUMBER	AND	DEVICE DESIGNATIONS
2	.0033M	.0033M	70330130	.0033M 5% 50vdc my	T&A
1	.0047M	.0047M	70330116	.0047 MFD 50VDC 5% MY	T&A
1	.0068M	.0068M	70330117	.0068mF--5%--50vdc--my--T&A	
1	.01	.01	70340011	.01MFD--10%--50VDC--T/C--T&R	
1	.018M	.018M	70330126	.018M 5% 50vdc my	T&A
2	.018RP2	.018RP2	70330139	.018MFD--2%--50VDC--P--T&A	
1	.033M	.033M	70330115	.033 MFD 50VDC 5% MY	T&A
2	.068M	.068M	70330124	.068M 5% 50vdc my	T&A
2	.1	.1	70340100	.1MFD--80-20%-50VDC--AXI--T&R	
1	.82M	.82M	70330122	.82mF 5% 50vdc my	T&A
1	.475P2	.475P2	70330148	.47MFD 5% 100VDC SF	T&A
3	100	100	70240010	100--1/4W--5%--CF--T&R	
4	100K	100K	70240034	100K--1/4W--5%--CF--T&R	
4	100PF	100PF	70340054	100PF--10%--50VDC--T/C--T&R	
25	10K	10K	70240025	10K--1/4W--5%--CF--T&R	
4	15K	15K	70240027	15K--1/4W--5%--CF--T&R	
3	180PF	180PF	70340056	180PF--10%--50VDC--T/C--T&R	
1	187SOWBD	70900935	SPACER.187 (#4),187	SWAGE BRASS	
7	187SOWD	70900924	SPACER.187 R(#4),187	SWAGE ALUM.	
2	1K	1K	70240017	1K--1/4W--5%--CF--T&R	
2	1M	1M	70240039	1M--1/4W--5%--CF--T&R	
18	1N4148	4148	70464148	1N4148 75V 10MA SILICON DIODE	
4	2.7K	2.7K	70240021	2.7K--1/4W--5%--CF--T&R	
5	220K	220K	70240036	220K--1/4W--5%--CF--T&R	
16	22K	22K	70240029	22K--1/4W--5%--CF--T&R	
19	22R50	22R50	70320181	22MF--20%--50VDC--EL--T&A	
2	2N3919	3919	70463919	SKA-3919 T092 NPN TRANS T&A	
4	330PF	330PF	70340070	330PF--10%--50VDC--T/C--T&R	
7	33K	33K	70240030	33K--1/4W--5%--CF--T&R	
2	4.7P	4.7P	70240094	4.7PF--1/4W--10%--FP--T&R	
2	4.7K	4.7K	70240023	4.7K--1/4W--5%--CF--T&R	
8	4560	4560	70414560	4560 DUAL OP AMP IC	
3	47	47	70240068	47--1/4W--5%--CF--T&R	
5	470	470	70240015	470--1/4W--5%--CF--T&R	
2	470PF	470PF	70340058	470PF--10%--50VDC--T/C--T&R	
1	47P	47P	70240090	47PF--1/4W--5%--FP--T&R	
4	47K	47K	70240031	47K--1/4W--5%--CF--T&R	
3	68K	68K	70240024	68K--1/4W--5%--CF--T&R	
2	68K	68K	70240023	68K--1/4W--5%--CF--T&R	
1	DG211	DG211	70462011	DG211 C.I.C.	
				U104	
				DU26	DU26 BALANCED OUT TRANSFORMER
				HIDM1	71466215 2 TIP HID JACK INSU W/SPD
				HIDM2	71466214 2 TIP HID JACK NINS W/SPD
				J104	70460174 J-174 30V TO-92 P-CHAN HET T&A
				J105	7105, J102, J103, J104, J105, J106, J200, J201
				J107	893-12 PN C.B. MALE MOLEX PIN
				J108	50K A.R.A. 20% DL MET SPDR 1MM
				J109	100K 20% DL MET SPDR 1MM
				J110	10K LIN DL MET SPDR 1MM
				J111	10K LIN METRIC SPDR 1MM
				J112	50K A.R.A. 20% DL MET SPDR 1MM
				J113	100K 20% DL MET SPDR 1MM
				J114	10K LIN DL MET SPDR 1MM
				J115	10K LIN METRIC SPDR 1MM
				J116	10K LIN METRIC SPDR 1MM
				J117	10K LIN METRIC SPDR 1MM
				J118	10K LIN METRIC SPDR 1MM
				J119	10K LIN METRIC SPDR 1MM
				J120	10K LIN METRIC SPDR 1MM
				J121	10K LIN METRIC SPDR 1MM
				J122	10K LIN METRIC SPDR 1MM
				J123	10K LIN METRIC SPDR 1MM
				J124	10K LIN METRIC SPDR 1MM
				J125	10K LIN METRIC SPDR 1MM
				J126	10K LIN METRIC SPDR 1MM
				J127	10K LIN METRIC SPDR 1MM
				J128	10K LIN METRIC SPDR 1MM
				J129	10K LIN METRIC SPDR 1MM
				J130	10K LIN METRIC SPDR 1MM
				J131	10K LIN METRIC SPDR 1MM
				J132	10K LIN METRIC SPDR 1MM
				J133	10K LIN METRIC SPDR 1MM
				J134	10K LIN METRIC SPDR 1MM
				J135	10K LIN METRIC SPDR 1MM
				J136	10K LIN METRIC SPDR 1MM
				J137	10K LIN METRIC SPDR 1MM
				J138	10K LIN METRIC SPDR 1MM
				J139	10K LIN METRIC SPDR 1MM
				J140	10K LIN METRIC SPDR 1MM
				J141	10K LIN METRIC SPDR 1MM
				J142	10K LIN METRIC SPDR 1MM
				J143	10K LIN METRIC SPDR 1MM
				J144	10K LIN METRIC SPDR 1MM
				J145	10K LIN METRIC SPDR 1MM
				J146	10K LIN METRIC SPDR 1MM
				J147	10K LIN METRIC SPDR 1MM
				J148	10K LIN METRIC SPDR 1MM
				J149	10K LIN METRIC SPDR 1MM
				J150	10K LIN METRIC SPDR 1MM
				J151	10K LIN METRIC SPDR 1MM
				J152	10K LIN METRIC SPDR 1MM
				J153	10K LIN METRIC SPDR 1MM
				J154	10K LIN METRIC SPDR 1MM
				J155	10K LIN METRIC SPDR 1MM
				J156	10K LIN METRIC SPDR 1MM
				J157	10K LIN METRIC SPDR 1MM
				J158	10K LIN METRIC SPDR 1MM
				J159	10K LIN METRIC SPDR 1MM
				J160	10K LIN METRIC SPDR 1MM
				J161	10K LIN METRIC SPDR 1MM
				J162	10K LIN METRIC SPDR 1MM
				J163	10K LIN METRIC SPDR 1MM
				J164	10K LIN METRIC SPDR 1MM
				J165	10K LIN METRIC SPDR 1MM
				J166	10K LIN METRIC SPDR 1MM
				J167	10K LIN METRIC SPDR 1MM
				J168	10K LIN METRIC SPDR 1MM
				J169	10K LIN METRIC SPDR 1MM
				J170	10K LIN METRIC SPDR 1MM
				J171	10K LIN METRIC SPDR 1MM
				J172	10K LIN METRIC SPDR 1MM
				J173	10K LIN METRIC SPDR 1MM
				J174	10K LIN METRIC SPDR 1MM
				J175	10K LIN METRIC SPDR 1MM
				J176	10K LIN METRIC SPDR 1MM
				J177	10K LIN METRIC SPDR 1MM
				J178	10K LIN METRIC SPDR 1MM
				J179	10K LIN METRIC SPDR 1MM
				J180	10K LIN METRIC SPDR 1MM
				J181	10K LIN METRIC SPDR 1MM
				J182	10K LIN METRIC SPDR 1MM
				J183	10K LIN METRIC SPDR 1MM
				J184	10K LIN METRIC SPDR 1MM
				J185	10K LIN METRIC SPDR 1MM
				J186	10K LIN METRIC SPDR 1MM
				J187	10K LIN METRIC SPDR 1MM
				J188	10K LIN METRIC SPDR 1MM
				J189	10K LIN METRIC SPDR 1MM
				J190	10K LIN METRIC SPDR 1MM
				J191	10K LIN METRIC SPDR 1MM
				J192	10K LIN METRIC SPDR 1MM
				J193	10K LIN METRIC SPDR 1MM
				J194	10K LIN METRIC SPDR 1MM
				J195	10K LIN METRIC SPDR 1MM
				J196	10K LIN METRIC SPDR 1MM
				J197	10K LIN METRIC SPDR 1MM
				J198	10K LIN METRIC SPDR 1MM
				J199	10K LIN METRIC SPDR 1MM
				J200	10K LIN METRIC SPDR 1MM



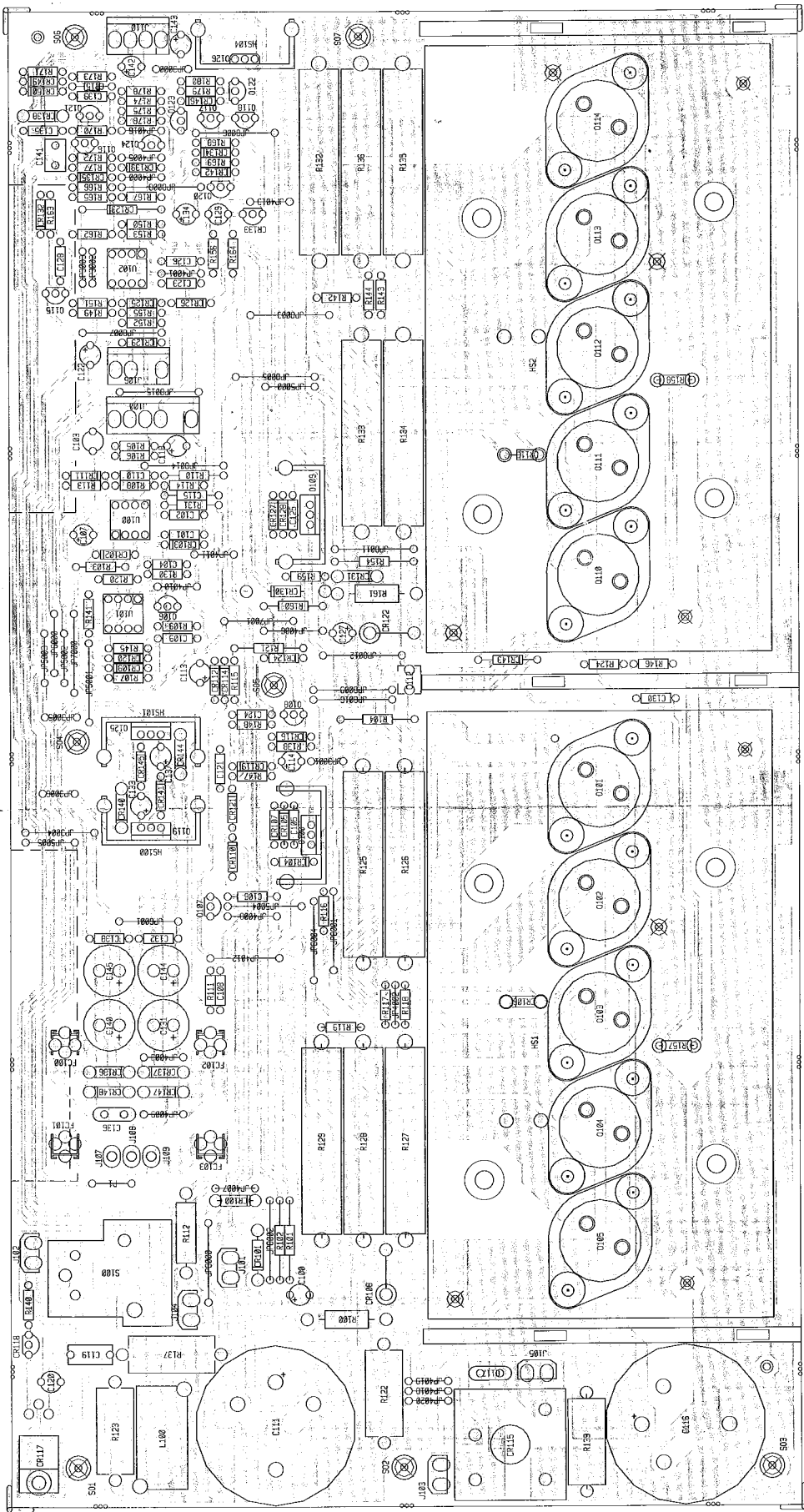
FireBass Preamp



NOTE: THIS CIRCUIT IS
 DESIGNED TO OPERATE
 WITH A 250V AC INPUT
 TRANSFORMER. THE
 OUTPUT OF THE
 CIRCUIT IS 250V AC.
 THE CIRCUIT IS
 DESIGNED TO OPERATE
 WITH A 250V AC INPUT
 TRANSFORMER. THE
 OUTPUT OF THE
 CIRCUIT IS 250V AC.
 THE CIRCUIT IS
 DESIGNED TO OPERATE
 WITH A 250V AC INPUT
 TRANSFORMER. THE
 OUTPUT OF THE
 CIRCUIT IS 250V AC.

THIS IS A POWER AMPLIFIER
 CIRCUIT. THE CIRCUIT
 IS DESIGNED TO OPERATE
 WITH A 250V AC INPUT
 TRANSFORMER. THE
 OUTPUT OF THE
 CIRCUIT IS 250V AC.
 THE CIRCUIT IS
 DESIGNED TO OPERATE
 WITH A 250V AC INPUT
 TRANSFORMER. THE
 OUTPUT OF THE
 CIRCUIT IS 250V AC.

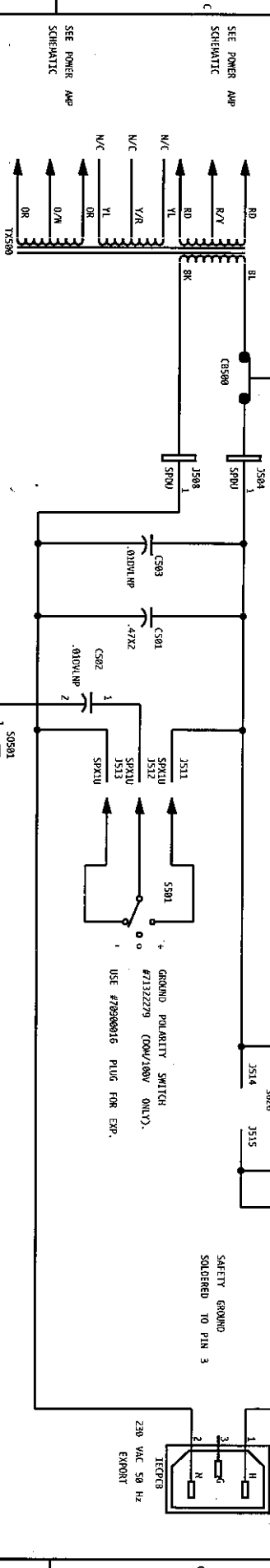
DATE	REVISION	BY	REASON
10/10/54	1	W. J. B.	INITIAL DESIGN
11/15/54	2	W. J. B.	REVISION
12/15/54	3	W. J. B.	REVISION
1/15/55	4	W. J. B.	REVISION
2/15/55	5	W. J. B.	REVISION
3/15/55	6	W. J. B.	REVISION
4/15/55	7	W. J. B.	REVISION
5/15/55	8	W. J. B.	REVISION
6/15/55	9	W. J. B.	REVISION
7/15/55	10	W. J. B.	REVISION
8/15/55	11	W. J. B.	REVISION
9/15/55	12	W. J. B.	REVISION
10/15/55	13	W. J. B.	REVISION
11/15/55	14	W. J. B.	REVISION
12/15/55	15	W. J. B.	REVISION
1/15/56	16	W. J. B.	REVISION
2/15/56	17	W. J. B.	REVISION
3/15/56	18	W. J. B.	REVISION
4/15/56	19	W. J. B.	REVISION
5/15/56	20	W. J. B.	REVISION
6/15/56	21	W. J. B.	REVISION
7/15/56	22	W. J. B.	REVISION
8/15/56	23	W. J. B.	REVISION
9/15/56	24	W. J. B.	REVISION
10/15/56	25	W. J. B.	REVISION
11/15/56	26	W. J. B.	REVISION
12/15/56	27	W. J. B.	REVISION
1/15/57	28	W. J. B.	REVISION
2/15/57	29	W. J. B.	REVISION
3/15/57	30	W. J. B.	REVISION
4/15/57	31	W. J. B.	REVISION
5/15/57	32	W. J. B.	REVISION
6/15/57	33	W. J. B.	REVISION
7/15/57	34	W. J. B.	REVISION
8/15/57	35	W. J. B.	REVISION
9/15/57	36	W. J. B.	REVISION
10/15/57	37	W. J. B.	REVISION
11/15/57	38	W. J. B.	REVISION
12/15/57	39	W. J. B.	REVISION
1/15/58	40	W. J. B.	REVISION
2/15/58	41	W. J. B.	REVISION
3/15/58	42	W. J. B.	REVISION
4/15/58	43	W. J. B.	REVISION
5/15/58	44	W. J. B.	REVISION
6/15/58	45	W. J. B.	REVISION
7/15/58	46	W. J. B.	REVISION
8/15/58	47	W. J. B.	REVISION
9/15/58	48	W. J. B.	REVISION
10/15/58	49	W. J. B.	REVISION
11/15/58	50	W. J. B.	REVISION
12/15/58	51	W. J. B.	REVISION
1/15/59	52	W. J. B.	REVISION
2/15/59	53	W. J. B.	REVISION
3/15/59	54	W. J. B.	REVISION
4/15/59	55	W. J. B.	REVISION
5/15/59	56	W. J. B.	REVISION
6/15/59	57	W. J. B.	REVISION
7/15/59	58	W. J. B.	REVISION
8/15/59	59	W. J. B.	REVISION
9/15/59	60	W. J. B.	REVISION
10/15/59	61	W. J. B.	REVISION
11/15/59	62	W. J. B.	REVISION
12/15/59	63	W. J. B.	REVISION
1/15/60	64	W. J. B.	REVISION
2/15/60	65	W. J. B.	REVISION
3/15/60	66	W. J. B.	REVISION
4/15/60	67	W. J. B.	REVISION
5/15/60	68	W. J. B.	REVISION
6/15/60	69	W. J. B.	REVISION
7/15/60	70	W. J. B.	REVISION
8/15/60	71	W. J. B.	REVISION
9/15/60	72	W. J. B.	REVISION
10/15/60	73	W. J. B.	REVISION
11/15/60	74	W. J. B.	REVISION
12/15/60	75	W. J. B.	REVISION
1/15/61	76	W. J. B.	REVISION
2/15/61	77	W. J. B.	REVISION
3/15/61	78	W. J. B.	REVISION
4/15/61	79	W. J. B.	REVISION
5/15/61	80	W. J. B.	REVISION
6/15/61	81	W. J. B.	REVISION
7/15/61	82	W. J. B.	REVISION
8/15/61	83	W. J. B.	REVISION
9/15/61	84	W. J. B.	REVISION
10/15/61	85	W. J. B.	REVISION
11/15/61	86	W. J. B.	REVISION
12/15/61	87	W. J. B.	REVISION
1/15/62	88	W. J. B.	REVISION
2/15/62	89	W. J. B.	REVISION
3/15/62	90	W. J. B.	REVISION
4/15/62	91	W. J. B.	REVISION
5/15/62	92	W. J. B.	REVISION
6/15/62	93	W. J. B.	REVISION
7/15/62	94	W. J. B.	REVISION
8/15/62	95	W. J. B.	REVISION
9/15/62	96	W. J. B.	REVISION
10/15/62	97	W. J. B.	REVISION
11/15/62	98	W. J. B.	REVISION
12/15/62	99	W. J. B.	REVISION
1/15/63	100	W. J. B.	REVISION



FIREBASS POWER AMP

POWER TRANSFORMER
 DOMESTIC: #70528736
 EXPORT: #70529336
 100V: #70529036

REAR PANEL
 CIRCUIT BREAKER
 DOMESTIC: 7 AMP, #7090123
 EXPORT: 4 AMP, #7090120
 100V: 9 AMP, #7090127



NOTICE!
 CS01 IS EXCLUDED ON DOMESTIC & 100V ASSM.
 CS02 AND CS03 ARE EXCLUDED ON EXPORT ASSM.

SEE POWER APP SCHEMATIC
 SEE POWER APP SCHEMATIC
 SEE POWER APP SCHEMATIC

GROUND POLARITY SWITCH
 #71322279 (DOM/100V ONLY).
 USE #79000916 PLUG FOR EXP.

POWER SWITCH
 SMS088
 1. 100V/50A
 2. 100V/50A
 3. 100V/50A

SAFETY GROUND
 SOLDERED TO PIN 3

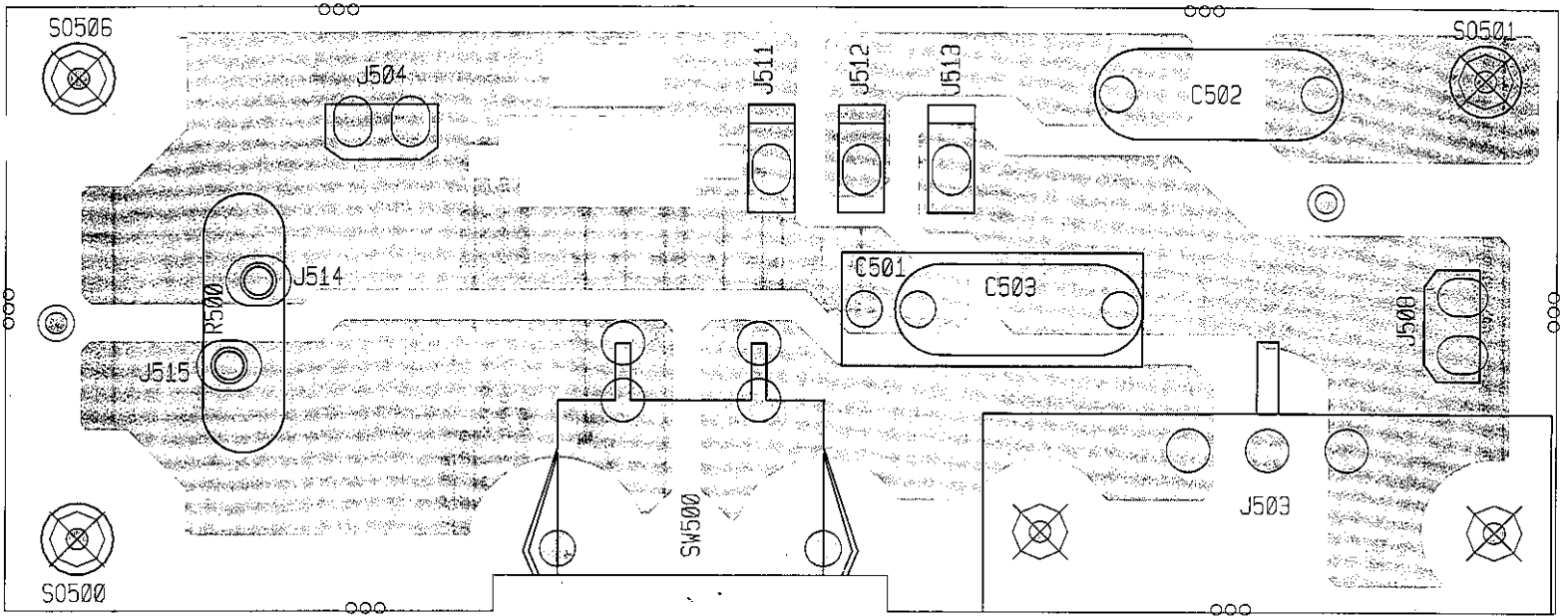
120 VAC 60 Hz
 DOMESTIC
 230 VAC 50 Hz
 EXPORT

50500
 N/C
 375000
 50506
 N/C
 375000

NOTICE: THIS CIRCUITRY IS
 PROTECTED BY U.S. PATENT NO.
 4,318,053 OWNED BY PEAVEY
 ELECTRONICS CORP. USE
 OR COPYING WITHOUT EXPRESS
 WRITTEN AUTHORITY FROM PEAVEY
 IS STRICTLY FORBIDDEN AND
 VIOLATORS WILL BE PROSECUTED
 TO THE FULLEST EXTENT ALLOWED
 UNDER U.S. PATENT LAWS.

PEAVEY ELECTRONICS CORP.		711 A STREET	
MERIDIAN, MISSISSIPPI 39301			
TITLE FITERBASS PRIMARY BOARD			
SIZE	CODE	NUMBER	REV
8		81500133	A
DATE	15-OCT-97		SHEET 1 OF 1

COPYRIGHT 1995 PEAVEY ELECTRONICS CORP. PRINTED IN U.S.A.



FIREBASS PRIMARY

EXPORT- INSERT C501 INSTEAD OF C503 AND
DO NOT INSERT C502, J511, J512 AND J513

DOM- INSERT C503 INSTEAD OF C501

BOARD NAME: PRIMARY/TRIAC

** QTY.	PART NAME	VALUE	PART NUMBER	DESCRIPTION AND DEVICE DESIGNATIONS *****
1	.47X2	.47X2	70320271	.47MF-20%-275VAC-MP-R/W C501
2	.01DVLNP	.01DVLNP	70320104	.01 MFD 125VDC DVL MYLAR +0-20% C502, C503
1	IECPCB	70901257	70901257	IEC POWER INLET R/A PCB MT. J503
2	SPDU	73716194	73716194	.250 PC MNT SPADE .093 PCB J504, J508
3	SPX1U	SPX1U	73717003	1 STAKE PIN J511, J512, J513
2	FMPU	73711811	73711811	M118-171 C.B. FEMALE MOLEX PIN J514, J515
1	SG26	70240210	70240210	5 OHM, 12 A INRUSH THERMISTOR R500
1	375SOWD	70900295	70900295	SPACER, 3/8,R(#4),.187 SWAGE ALUM. S0500
1	375SOWBD	70900779	70900779	SPACER, 3/8,R(#4),.187 SWAGE BRASS S0501
1	375SOWD	70900295	70900295	SPACER, 3/8,R(#4),.187 SWAGE ALUM. S0506
1	PCMTRASW	PCMTRASW	71322377	PC MOUNT RIGHT ANGLE POWER SWITCH SW500
